

BID TABULATION FOR:

CONSTRUCTION OF THE WATER, SANITARY SEWER, DRAINAGE FACILITIES & PAVING AND APPURTENANCES TO SERVE HARVEST GREEN SECTION 56
FORT BEND COUNTY MUNICIPAL UTILITY DISTRICT NO. 134F
CITY OF HOUSTON E.T.J., FORT BEND COUNTY, TEXAS
DECEMBER 17, 2024
LJA ENGINEERING, INC.
E. MURPHY
DECEMBER 18, 2024
2659-2156, 2659-2156C (9.2)

BID OPENING DATE:

BID OPENING LOCATION:

TABULATION BY:

TABULATION DATE:

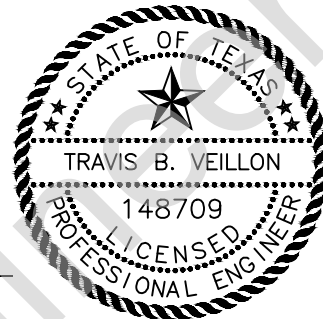
LJA JOB NO.

BIDDER NAME	BASE BID
1) HURTADO CONSTRUCTION COMPANY	\$2,558,588.88
2) R CONSTRUCTION CIVIL, LLC	\$2,760,157.00
3) PARK CONSTRUCTION ASSOCIATES, LLC	\$2,973,569.10
4) CE BARKER LTD.	\$2,985,063.66

CALENDAR TIME 100/110



I, Travis Veillon, PE, hereby certify these bid tabulations to be true and correct.



12/19/2024

LJA Engineering, Inc.

BID TABULATION FOR:

**CONSTRUCTION OF THE WATER, SANITARY SEWER, DRAINAGE FACILITIES & PAVING AND APPURTENANCES TO SERVE HARVEST GREEN SECTION 56
 FORT BEND COUNTY MUNICIPAL UTILITY DISTRICT NO. 134F
 CITY OF HOUSTON E.T.J., FORT BEND COUNTY, TEXAS
 DECEMBER 17, 2024
 LJA ENGINEERING, INC.
 E. MURPHY
 DECEMBER 18, 2024
 2659-2156, 2659-2156C (9.2)**

**BID OPENING DATE:
 BID OPENING LOCATION:
 TABULATION BY:
 TABULATION DATE:
 LJA JOB NO.**

NO.	ITEM DESCRIPTION	UNIT	QTY	1) HURTADO CONSTRUCTION COMPANY		2) R CONSTRUCTION CIVIL, LLC		3) PARK CONSTRUCTION ASSOCIATES, LLC		4) CE BARKER LTD.		
				UNIT COST	TOTAL	UNIT COST	TOTAL	UNIT COST	TOTAL	UNIT COST	TOTAL	
WATER ITEMS – HARVEST GREEN SECTION 56												
1.	8" PVC WATER PIPE, C-900, DR 18, CLASS 235, ALL DEPTHS, INCLUDES ALL FITTINGS (TEES, BENDS, MIN. 20 GA COPPER TRACER WIRE, REDUCERS, THRUST BLOCKS AND CONNECTOR ETC.), BLUE IN COLOR, BEDDING AND BACKFILL, COMPLETE IN PLACE	LF	3278	\$35.08	\$114,992.24	\$38.00	\$124,564.00	\$47.00	\$154,066.00	\$50.00	\$163,900.00	
2.	8" PVC RESTRAINED JOINT WATER PIPE, C-900, DR 14, CLASS 305, ALL DEPTHS, INCLUDES ALL FITTINGS (TEES, BENDS, MIN. 20 GA COPPER TRACER WIRE, REDUCERS, THRUST BLOCKS AND CONNECTOR ETC.), BLUE IN COLOR, BEDDING AND BACKFILL, COMPLETE IN PLACE	LF	991	\$55.00	\$54,505.00	\$72.00	\$71,352.00	\$48.50	\$48,063.50	\$65.00	\$64,415.00	
3.	8" AWWA GATE VALVE AND BOX, ALL DEPTHS, COMPLETE IN PLACE	EA	12	\$1,758.00	\$21,096.00	\$2,200.00	\$26,400.00	\$2,465.50	\$29,586.00	\$2,100.00	\$25,200.00	
4.	12" PVC WATER PIPE, C-900, DR 18, CLASS 235, ALL DEPTHS, INCLUDES ALL FITTINGS (TEES, BENDS, MIN. 20 GA COPPER TRACER WIRE, REDUCERS, THRUST BLOCKS AND CONNECTOR ETC.), BLUE IN COLOR, BEDDING AND BACKFILL, COMPLETE IN PLACE	LF	209	\$55.18	\$11,532.62	\$80.00	\$16,720.00	\$92.00	\$19,228.00	\$70.00	\$14,630.00	
5.	FLUSHING VALVE UNIT, ALL DEPTHS, INCLUDES APPROPRIATE TEE AND RESTRAINED JOINT FITTINGS, 6" VALVE & BOX, 6" LEAD AND FIRE HYDRANT, THRUST BLOCKS, BLIND FLANGES, AND ADJUSTMENTS AS NECESSARY, COMPLETE IN PLACE	EA	12	\$8,000.00	\$96,000.00	\$6,600.00	\$79,200.00	\$6,014.00	\$72,168.00	\$6,000.00	\$72,000.00	
6.	14" STEEL CASE PIPE INCLUDES SPACERS, COMPLETE IN PLACE	LF	535	\$44.48	\$23,796.80	\$75.00	\$40,125.00	\$103.00	\$55,105.00	\$80.00	\$42,800.00	
7.	CONNECT PROPOSED 8" WATERLINE TO EXISTING 8" WATERLINE, INCLUDES REMOVING EXISTING 8" PLUG AND CLAMP AND BLOW-OFF VALVE AND ALL NECESSARY ADAPTERS AND CONNECTORS, COMPLETE IN PLACE	EA	2	\$8.00	\$16.00	\$450.00	\$900.00	\$1,203.00	\$2,406.00	\$750.00	\$1,500.00	
8.	CONNECT PROPOSED 12" WATERLINE TO EXISTING 12" WATERLINE, INCLUDES REMOVING EXISTING 8" PLUG AND CLAMP AND BLOW-OFF VALVE AND ALL NECESSARY ADAPTERS AND CONNECTORS, COMPLETE IN PLACE	EA	1	\$8.00	\$8.00	\$750.00	\$750.00	\$1,203.00	\$1,203.00	\$1,200.00	\$1,200.00	
9.	PLUG AND CLAMP WITH 2" BLOW-OFF VALVE AND BOX, ALL SIZES AND DEPTHS, COMPLETE IN PLACE	EA	4	\$778.00	\$3,112.00	\$1,600.00	\$6,400.00	\$668.00	\$2,672.00	\$1,300.00	\$5,200.00	
10.	TRENCH SAFETY SYSTEM, ALL DEPTHS, ALL SIZES, COMPLETE IN PLACE	LF	4478	\$0.08	\$358.24	\$1.00	\$4,478.00	\$0.15	\$671.70	\$0.01	\$44.78	
SUBTOTAL WATER ITEMS – HARVEST GREEN SECTION 56					\$325,416.90		\$370,889.00		\$385,169.20		\$390,889.78	
SANITARY SEWER ITEMS – HARVEST GREEN SECTION 56												
1.	8" PVC SEWER PIPE, ASTM D-2241, SDR 26, PR 160, 0'-8' CUT, GREEN IN COLOR, INCLUDES BEDDING AND BACKFILL, COMPLETE IN PLACE	LF	1824	\$56.58	\$103,201.92	\$40.00	\$72,960.00	\$50.00	\$91,200.00	\$60.00	\$109,440.00	
2.	8" PVC SEWER PIPE, ASTM D-2241, SDR 26, PR 160, 8'-12' CUT, GREEN IN COLOR, INCLUDES BEDDING AND BACKFILL, COMPLETE IN PLACE	LF	636	\$57.58	\$36,620.88	\$42.00	\$26,712.00	\$50.00	\$31,800.00	\$65.00	\$41,340.00	
3.	8" PVC SEWER PIPE, ASTM D-2241, SDR 26, PR 160, 12'-16' CUT, GREEN IN COLOR, INCLUDES BEDDING AND BACKFILL, COMPLETE IN PLACE	LF	986	\$59.58	\$58,745.88	\$44.00	\$43,384.00	\$50.00	\$49,300.00	\$70.00	\$69,020.00	
4.	PRECAST STANDARD SANITARY SEWER MANHOLE FOR 6" – 24" SANITARY SEWER PIPES, INCLUDES INFLOW PROTECTOR, INCLUDES ADJUSTMENTS, COMPLETE IN PLACE	EA	28	\$4,800.00	\$134,400.00	\$3,000.00	\$84,000.00	\$2,969.00	\$83,132.00	\$3,300.00	\$92,400.00	
5.	EXTRA DEPTH FOR SANITARY SEWER MANHOLE, (GREATER THAN 8' DEPTH), COMPLETE IN PLACE	VF	64.88	\$138.00	\$8,953.44	\$200.00	\$12,976.00	\$154.00	\$9,991.52	\$210.00	\$13,624.80	
6.	STANDARD SANITARY SEWER MANHOLE DROP, COMPLETE IN PLACE	EA	1	\$688.00	\$688.00	\$700.00	\$700.00	\$1,276.00	\$1,276.00	\$1,300.00	\$1,300.00	

BID TABULATION FOR:

**CONSTRUCTION OF THE WATER, SANITARY SEWER, DRAINAGE FACILITIES & PAVING AND APPURTENANCES TO SERVE HARVEST GREEN SECTION 56
 FORT BEND COUNTY MUNICIPAL UTILITY DISTRICT NO. 134F
 CITY OF HOUSTON E.T.J., FORT BEND COUNTY, TEXAS
 DECEMBER 17, 2024
 LJA ENGINEERING, INC.
 E. MURPHY
 DECEMBER 18, 2024
 2659-2156, 2659-2156C (9.2)**

**BID OPENING DATE:
 BID OPENING LOCATION:
 TABULATION BY:
 TABULATION DATE:
 LJA JOB NO.**

NO.	ITEM DESCRIPTION	UNIT	QTY	1) HURTADO CONSTRUCTION COMPANY		2) R CONSTRUCTION CIVIL, LLC		3) PARK CONSTRUCTION ASSOCIATES, LLC		4) CE BARKER LTD.	
				UNIT COST	TOTAL	UNIT COST	TOTAL	UNIT COST	TOTAL	UNIT COST	TOTAL
7.	SANITARY MANHOLE DROP EXTRA DEPTH OVER 3', COMPLETE IN PLACE	VF	0.95	\$12.00	\$11.40	\$200.00	\$190.00	\$40.10	\$38.10	\$70.00	\$66.50
8.	"LONG SIDE" DOUBLE OR SINGLE 6" PVC PIPE SERVICE LEADS, ASTM D-2241, SDR 26, ALL DEPTHS, INCLUDING PIPE, CEMENT STABILIZED SAND BACKFILL, STACK AND RISER AS NECESSARY, WYE, PLUG, MARKER, AND ANY NECESSARY FITTINGS, ETC., GREEN IN COLOR, COMPLETE IN PLACE	LF	1142	\$65.00	\$74,230.00	\$52.00	\$59,384.00	\$54.27	\$61,976.34	\$70.00	\$79,940.00
9.	"SHORT SIDE" DOUBLE OR SINGLE 6" PVC PIPE SERVICE LEADS, ASTM D-2241, SDR 26, ALL DEPTHS, INCLUDING PIPE, CEMENT STABILIZED SAND BACKFILL, STACK AND RISER AS NECESSARY, WYE, PLUG, MARKER, AND ANY NECESSARY FITTINGS, GREEN IN COLOR, COMPLETE IN PLACE	EA	18	\$1,488.00	\$26,784.00	\$2,200.00	\$39,600.00	\$1,629.00	\$29,322.00	\$2,200.00	\$39,600.00
10.	CORE INTO EXISTING MANHOLE AND CONNECT PROPOSED 8" SANITARY SEWER, ALL DEPTHS, COMPLETE IN PLACE	EA	3	\$1,000.00	\$3,000.00	\$1,700.00	\$5,100.00	\$2,138.15	\$6,414.45	\$1,000.00	\$3,000.00
11.	TRENCH SAFETY SYSTEM, ALL DEPTHS, ALL SIZES, COMPLETE IN PLACE	LF	4875	\$0.08	\$390.00	\$1.00	\$4,875.00	\$0.15	\$731.25	\$0.01	\$48.75
12.	POST CONSTRUCTION CLEANING AND VIDEO TAPING OF SANITARY SEWER LINE TO BE PROVIDED TO ENGINEER FOR ACCEPTANCE, COMPLETE IN PLACE	LF	3446	\$0.01	\$34.46	\$2.00	\$6,892.00	\$3.35	\$11,544.10	\$5.00	\$17,230.00
SUBTOTAL SANITARY SEWER ITEMS – HARVEST GREEN SECTION 56					\$447,059.98		\$356,773.00		\$376,725.76		\$467,010.05
DRAINAGE FACILITIES ITEMS – HARVEST GREEN SECTION 56											
1.	24" RCP, STORM SEWER, ASTM C-76, CLASS III, ALL CUTS, INCLUDES BEDDING AND BACKFILL, COMPLETE IN PLACE	LF	1368	\$98.00	\$134,064.00	\$85.00	\$116,280.00	\$115.30	\$157,730.40	\$125.00	\$171,000.00
2.	30" RCP, STORM SEWER, ASTM C-76, CLASS III, ALL CUTS, INCLUDES BEDDING AND BACKFILL, COMPLETE IN PLACE	LF	269	\$118.00	\$31,742.00	\$117.00	\$31,473.00	\$139.52	\$37,530.88	\$145.00	\$39,005.00
3.	36" RCP, STORM SEWER, ASTM C-76, CLASS III, ALL CUTS, INCLUDES BEDDING AND BACKFILL, COMPLETE IN PLACE	LF	190	\$138.00	\$26,220.00	\$151.00	\$28,690.00	\$188.00	\$35,720.00	\$175.00	\$33,250.00
4.	42" RCP, STORM SEWER, ASTM C-76, CLASS III, ALL CUTS, INCLUDES BEDDING AND BACKFILL, COMPLETE IN PLACE	LF	828	\$160.48	\$132,877.44	\$198.00	\$163,944.00	\$248.50	\$205,758.00	\$225.00	\$186,300.00
5.	48" RCP, STORM SEWER, ASTM C-76, CLASS III, ALL CUTS, INCLUDES BEDDING AND BACKFILL, COMPLETE IN PLACE	LF	132	\$212.38	\$28,034.16	\$270.00	\$35,640.00	\$292.17	\$38,566.44	\$265.00	\$34,980.00
6.	54" RCP, STORM SEWER, ASTM C-76, CLASS III, ALL CUTS, INCLUDES BEDDING AND BACKFILL, COMPLETE IN PLACE	LF	534	\$253.58	\$135,411.72	\$325.00	\$173,550.00	\$417.80	\$223,105.20	\$375.00	\$200,250.00
7.	60" RCP, STORM SEWER, ASTM C-76, CLASS III, ALL CUTS, INCLUDES BEDDING AND BACKFILL, COMPLETE IN PLACE	LF	162	\$298.58	\$48,369.96	\$449.00	\$72,738.00	\$485.93	\$78,720.66	\$435.00	\$70,470.00
8.	REINFORCED CONCRETE PRECAST OR REINFORCED CONCRETE CAST-IN-PLACE TYPE "C" MANHOLE FOR 42" STORM SEWER AND SMALLER, ALL DEPTHS, INCLUDES ADJUSTMENTS, COMPLETE IN PLACE	EA	15	\$4,800.00	\$72,000.00	\$3,600.00	\$54,000.00	\$3,160.45	\$47,406.75	\$3,500.00	\$52,500.00
9.	REINFORCED CONCRETE PRECAST OR REINFORCED CONCRETE CAST-IN-PLACE TYPE "C" MANHOLE FOR 48" STORM SEWER AND LARGER, ALL DEPTHS, INCLUDES ADJUSTMENTS, COMPLETE IN PLACE	EA	10	\$5,800.00	\$58,000.00	\$5,900.00	\$59,000.00	\$6,885.50	\$68,855.00	\$5,800.00	\$58,000.00
10.	REINFORCED CONCRETE PRECAST OR REINFORCED CONCRETE CAST-IN-PLACE TYPE "C" MANHOLE WITH "E" INLET TOP (OPEN ALL SIDES) FOR 42" STORM SEWER AND SMALLER, ALL DEPTHS, INCLUDES ADJUSTMENTS, COMPLETE IN PLACE	EA	1	\$8,000.00	\$8,000.00	\$3,200.00	\$3,200.00	\$5,500.00	\$5,500.00	\$3,500.00	\$3,500.00
11.	STAGE I – REINFORCED CONCRETE PRECAST INLET, (TYPE "C"), ALL DEPTHS, COMPLETE IN PLACE	EA	18	\$1,078.00	\$19,404.00	\$1,500.00	\$27,000.00	\$1,250.00	\$22,500.00	\$1,500.00	\$27,000.00

BID TABULATION FOR:

CONSTRUCTION OF THE WATER, SANITARY SEWER, DRAINAGE FACILITIES & PAVING AND APPURTENANCES TO SERVE HARVEST GREEN SECTION 56
FORT BEND COUNTY MUNICIPAL UTILITY DISTRICT NO. 134F
CITY OF HOUSTON E.T.J., FORT BEND COUNTY, TEXAS
DECEMBER 17, 2024
LJA ENGINEERING, INC.
E. MURPHY
DECEMBER 18, 2024
2659-2156, 2659-2156C (9.2)

BID OPENING DATE:
BID OPENING LOCATION:
TABULATION BY:
TABULATION DATE:
LJA JOB NO.

NO.	ITEM DESCRIPTION	UNIT	QTY	1) HURTADO CONSTRUCTION COMPANY		2) R CONSTRUCTION CIVIL, LLC		3) PARK CONSTRUCTION ASSOCIATES, LLC		4) CE BARKER LTD.	
				UNIT COST	TOTAL	UNIT COST	TOTAL	UNIT COST	TOTAL	UNIT COST	TOTAL
12.	STAGE II – REINFORCED CONCRETE PRECAST INLET, (TYPE “C”), ALL DEPTHS, COMPLETE IN PLACE	EA	18	\$1,518.00	\$27,324.00	\$2,700.00	\$48,600.00	\$2,780.00	\$50,040.00	\$1,500.00	\$27,000.00
13.	STAGE I – REINFORCED CONCRETE PRECAST INLET, (TYPE “C-1”), 10’ OPENING, COMPLETE IN PLACE	EA	2	\$1,748.00	\$3,496.00	\$1,300.00	\$2,600.00	\$1,410.00	\$2,820.00	\$2,600.00	\$5,200.00
14.	STAGE II – REINFORCED CONCRETE PRECAST INLET, (TYPE “C-2”), 10’ OPENING, COMPLETE IN PLACE	EA	2	\$2,248.00	\$4,496.00	\$3,100.00	\$6,200.00	\$3,375.00	\$6,750.00	\$1,600.00	\$3,200.00
15.	STAGE I – REINFORCED CONCRETE PRECAST INLET, (TYPE “C-2”), 15’ OPENING, COMPLETE IN PLACE	EA	3	\$1,818.00	\$5,454.00	\$1,700.00	\$5,100.00	\$1,477.00	\$4,431.00	\$3,200.00	\$9,600.00
16.	STAGE II – REINFORCED CONCRETE PRECAST INLET, (TYPE “C-2”), 15’ OPENING, COMPLETE IN PLACE	EA	3	\$2,468.00	\$7,404.00	\$3,400.00	\$10,200.00	\$4,183.00	\$12,549.00	\$1,750.00	\$5,250.00
17.	CONTRACTOR TO BREAK INTO TYPE “C” MANHOLE & CONNECT PROPOSED STORM SEWER, ALL DEPTHS, 54” RCP, COMPLETE IN PLACE	EA	1	\$1,288.00	\$1,288.00	\$700.00	\$700.00	\$4,076.00	\$4,076.00	\$750.00	\$750.00
18.	TRENCH SAFETY SYSTEM, ALL DEPTHS, ALL SIZES, COMPLETE IN PLACE	LF	3483	\$1.00	\$3,483.00	\$1.00	\$3,483.00	\$0.15	\$522.45	\$0.01	\$34.83
SUBTOTAL DRAINAGE FACILITIES ITEMS – HARVEST GREEN SECTION 56					\$747,068.28		\$842,398.00		\$1,002,581.78		\$927,289.83
PAVING ITEMS - HARVEST GREEN SECTION 56											
1.	6-INCH REINFORCED CONCRETE PAVEMENT (3,500 PSI / 5.5 SACK CEMENT PER CUBIC YARD), COMPLETE IN PLACE	SY	11454	\$52.88	\$605,687.52	\$58.00	\$664,332.00	\$54.00	\$618,516.00	\$60.00	\$687,240.00
2.	4-INCH X 12-INCH REINFORCED CONCRETE CURB (3,500 PSI), COMPLETE IN PLACE	SY	2989	\$3.88	\$11,597.32	\$5.00	\$14,945.00	\$3.15	\$9,415.35	\$5.00	\$14,945.00
3.	6-INCH REINFORCED CONCRETE CURB (3,500 PSI), COMPLETE IN PLACE	LF	1159	\$3.88	\$4,496.92	\$5.00	\$5,795.00	\$3.15	\$3,650.85	\$5.00	\$5,795.00
4.	8-INCH LIME STABILIZED SUBGRADE FOR 6-INCH PAVEMENT (MANIPULATION), COMPLETE IN PLACE	SY	12900	\$3.08	\$39,732.00	\$8.00	\$103,200.00	\$5.00	\$64,500.00	\$5.00	\$64,500.00
5.	3% HYDRATED LIME FOR SUBGRADE, (BY DRY UNIT WEIGHT) AS REQUIRED BY SOIL CONDITIONS AND APPROVED BY GEOTECHNICAL ENGINEER, COMPLETE IN PLACE	TON	128	\$358.00	\$45,824.00	\$340.00	\$43,520.00	\$340.00	\$43,520.00	\$360.00	\$46,080.00
6.	7% FLY ASH FOR SUBGRADE, (BY DRY UNIT WEIGHT) AS REQUIRED BY SOIL CONDITIONS AND APPROVED BY GEOTECHNICAL ENGINEER, COMPLETE IN PLACE	TON	298	\$158.00	\$47,084.00	\$140.00	\$41,720.00	\$150.00	\$44,700.00	\$170.00	\$50,660.00
7.	FINAL LOT AND RESERVE GRADING, COMPLETE IN PLACE	LS	1	\$22,000.00	\$22,000.00	\$12,000.00	\$12,000.00	\$12,100.00	\$12,100.00	\$210.00	\$210.00
8.	ROADWAY, LOT AND RESERVE EMBANKMENT INCLUDES STRIPPINGS, STOCKPILING OF STRIPPINGS, COMPACTION TO 95% STANDARD PROCTOR DENSITY, RE-APPLICATION OF STRIPPINGS, COMPLETE IN PLACE	CY	3510	\$3.75	\$13,162.50	\$3.00	\$10,530.00	\$4.00	\$14,040.00	\$4.00	\$14,040.00
9.	ROADWAY, LOT AND RESERVE EXCAVATION, INCLUDES STRIPPINGS, STOCKPILING OF STRIPPINGS, AND RE-APPLICATION OF STRIPPINGS, TO APPLICABLE AREAS, COMPLETE IN PLACE	CY	3510	\$3.75	\$13,162.50	\$3.00	\$10,530.00	\$4.00	\$14,040.00	\$3.50	\$12,285.00
10.	TYPE 7 ADA RAMPS, COMPLETE IN PLACE	EA	10	\$1,688.00	\$16,880.00	\$2,300.00	\$23,000.00	\$1,400.00	\$14,000.00	\$1,600.00	\$16,000.00
11.	PERMANENT TRAFFIC CONTROL DEVICES, (INCLUDING ALL TRAFFIC BUTTONS, PERMANENT STRIPING AND PERMANENT SIGNAGE), COMPLETE IN PLACE	LS	1	\$17,034.85	\$17,034.85	\$11,000.00	\$11,000.00	\$10,050.00	\$10,050.00	\$12,000.00	\$12,000.00

BID TABULATION FOR:

**CONSTRUCTION OF THE WATER, SANITARY SEWER, DRAINAGE FACILITIES & PAVING AND APPURTENANCES TO SERVE HARVEST GREEN SECTION 56
 FORT BEND COUNTY MUNICIPAL UTILITY DISTRICT NO. 134F
 CITY OF HOUSTON E.T.J., FORT BEND COUNTY, TEXAS
 DECEMBER 17, 2024
 LJA ENGINEERING, INC.
 E. MURPHY
 DECEMBER 18, 2024
 2659-2156, 2659-2156C (9.2)**

**BID OPENING DATE:
 BID OPENING LOCATION:
 TABULATION BY:
 TABULATION DATE:
 LJA JOB NO.**

NO.	ITEM DESCRIPTION	UNIT	QTY	1) HURTADO CONSTRUCTION COMPANY		2) R CONSTRUCTION CIVIL, LLC		3) PARK CONSTRUCTION ASSOCIATES, LLC		4) CE BARKER LTD.	
				UNIT COST	TOTAL	UNIT COST	TOTAL	UNIT COST	TOTAL	UNIT COST	TOTAL
12.	TEMPORARY TRAFFIC CONTROL DEVICES (INCLUDING ALL TRAFFIC BUTTONS, PAVEMENT STRIPING, STREET SIGNS, AND TRAFFIC SIGNS), COMPLETE IN PLACE	LS	1	\$8.00	\$8.00	\$7,500.00	\$7,500.00	\$2,500.00	\$2,500.00	\$1,600.00	\$1,600.00
13.	DOUBLE REFLECTORIZED BLUE BUTTONS FOR FIRE HYDRANTS, COMPLETE IN PLACE	EA	12	\$28.00	\$336.00	\$15.00	\$180.00	\$10.00	\$120.00	\$15.00	\$180.00
14.	PROPOSED TYPE III BARRICADE, COMPLETE IN PLACE	EA	3	\$8.00	\$24.00	\$1,200.00	\$3,600.00	\$1,500.00	\$4,500.00	\$1,300.00	\$3,900.00
15.	REMOVAL AND DISPOSAL OF TYPE III BARRICADE, COMPLETE IN PLACE	EA	3	\$0.01	\$0.03	\$1.00	\$3.00	\$1.00	\$3.00	\$100.00	\$300.00
16.	CONNECTION TO EXISTING 6-INCH CONCRETE PAVEMENT, COMPLETE IN PLACE	EA	3	\$1,500.00	\$4,500.00	\$2,200.00	\$6,600.00	\$500.00	\$1,500.00	\$1,500.00	\$4,500.00
17.	PAVEMENT HEADER, COMPLETE IN PLACE	LF	84	\$28.00	\$2,352.00	\$33.00	\$2,772.00	\$25.00	\$2,100.00	\$85.00	\$7,140.00
18.	6-INCH SCHEDULED 40 PVC IRRIGATION SLEEVES (HORIZONTAL SLEEVE ONLY), NO SEPARATE PAY FOR VERTICAL SLEEVE, COMPLETE IN PLACE	LF	29	\$48.00	\$1,392.00	\$65.00	\$1,885.00	\$30.00	\$870.00	\$28.00	\$812.00
19.	8-INCH SCHEDULED 40 PVC IRRIGATION SLEEVES (HORIZONTAL SLEEVE ONLY), NO SEPARATE PAY FOR VERTICAL SLEEVE, COMPLETE IN PLACE	LF	64	\$51.00	\$3,264.00	\$70.00	\$4,480.00	\$34.00	\$2,176.00	\$28.00	\$1,792.00
SUBTOTAL PAVING ITEMS - HARVEST GREEN SECTION 56					\$848,537.64		\$967,592.00		\$862,301.20		\$943,979.00
MISCELLANEOUS WS&D ITEMS – HARVEST GREEN SECTION 56											
1.	CEMENT STABILIZED SAND, 1.5 SACKS OF CEMENT PER CUBIC YARD OF MIX, (TO BE USED ONLY AT THE WRITTEN DIRECTION OF THE ENGINEER), ALL DEPTHS, COMPLETE IN PLACE	TON	1	\$20.00	\$20.00	\$30.00	\$30.00	\$40.00	\$40.00	\$30.00	\$30.00
2.	ADDITIONAL DUCTILE IRON FITTINGS, (TO BE USED ONLY AT THE WRITTEN DIRECTION OF THE ENGINEER), COMPLETE IN PLACE	TON	2	\$1.00	\$2.00	\$1,000.00	\$2,000.00	\$100.00	\$200.00	\$6,500.00	\$13,000.00
3.	STORM WATER POLLUTION PREVENTION PLAN COMPLIANCE AND INSPECTIONS, INCLUDING STREET SWEEPING, COMPLETE IN PLACE	LS	1	\$800.00	\$800.00	\$1,300.00	\$1,300.00	\$73,011.16	\$73,011.16	\$1,600.00	\$1,600.00
4.	STAGE I INLET PROTECTION BARRIERS, COMPLETE IN PLACE	EA	21	\$88.00	\$1,848.00	\$50.00	\$1,050.00	\$15.00	\$315.00	\$140.00	\$2,940.00
5.	CONSTRUCT AND MAINTAIN STABILIZED CONSTRUCTION EXIT, COMPLETE IN PLACE	EA	1	\$8.00	\$8.00	\$1,400.00	\$1,400.00	\$5,000.00	\$5,000.00	\$3,000.00	\$3,000.00
6.	CONCRETE TRUCK WASHOUT, COMPLETE IN PLACE	EA	1	\$800.00	\$800.00	\$500.00	\$500.00	\$3,000.00	\$3,000.00	\$975.00	\$975.00
7.	HYDROMULCH SEEDING OF SWALES, INCLUDES WATERING, COMPLETE IN PLACE	AC	1	\$1,500.00	\$1,500.00	\$1,500.00	\$1,500.00	\$1,800.00	\$1,800.00	\$1,500.00	\$1,500.00
8.	UTILITY SPOILS FROM SECTION 56 TO BE USED ON-SITE, INCLUDES HAULING, PLACEMENT AND COMPACTION TO 95% STANDARD PROCTOR DENSITY, COMPLETE IN PLACE	LS	1	\$3,200.00	\$3,200.00	\$7,200.00	\$7,200.00	\$40,000.00	\$40,000.00	\$27,250.00	\$27,250.00
9.	ADDITIONAL COST TO HAUL UTILITY SPOILS FROM SECTION 56 OFF-SITE BUT WITHIN DEVELOPMENT, NO MORE THAN 3,500 FT (TO BE USED ONLY AT THE WRITTEN DIRECTION OF THE ENGINEER), INCLUDES STRIPPING, STOCK PILING OF STRIPPINGS, EMBANKMENT, AND REAPPLYING OF STRIPPINGS TO FINAL GRADED AREA, COMPLETE IN PLACE	CY	1000	\$0.50	\$500.00	\$10.00	\$10,000.00	\$6.00	\$6,000.00	\$3.50	\$3,500.00
10.	SURFACE WATER CONTROL, INCLUDES PUMPING REQUIRED TO CONSTRUCT PROPOSED PROJECT, (TO BE USED ONLY AT THE WRITTEN DIRECTION OF THE ENGINEER), COMPLETE IN PLACE	LS	1	\$0.08	\$0.08	\$5,000.00	\$5,000.00	\$5,000.00	\$5,000.00	\$2,500.00	\$2,500.00

BID TABULATION FOR:

**CONSTRUCTION OF THE WATER, SANITARY SEWER, DRAINAGE FACILITIES & PAVING AND APPURTENANCES TO SERVE HARVEST GREEN SECTION 56
 FORT BEND COUNTY MUNICIPAL UTILITY DISTRICT NO. 134F
 CITY OF HOUSTON E.T.J., FORT BEND COUNTY, TEXAS
 DECEMBER 17, 2024
 LJA ENGINEERING, INC.
 E. MURPHY
 DECEMBER 18, 2024
 2659-2156, 2659-2156C (9.2)**

**BID OPENING DATE:
 BID OPENING LOCATION:
 TABULATION BY:
 TABULATION DATE:
 LJA JOB NO.**

NO.	ITEM DESCRIPTION	UNIT	QTY	1) HURTADO CONSTRUCTION COMPANY		2) R CONSTRUCTION CIVIL, LLC		3) PARK CONSTRUCTION ASSOCIATES, LLC		4) CE BARKER LTD.	
				UNIT COST	TOTAL	UNIT COST	TOTAL	UNIT COST	TOTAL	UNIT COST	TOTAL
11.	DEWATERING INCLUDES CONVENTIONAL VACUUM TYPE WELL POINTS, INTERNAL SUMPS AND PUMPS, OR ANY TYPE OF PUMPING AS NECESSARY TO COMPLETE THE CONSTRUCTION OF THE PROJECT, (TO BE USED ONLY AT THE WRITTEN DIRECTION OF THE ENGINEER), COMPLETE IN PLACE	LF	3445	\$20.00	\$68,900.00	\$20.00	\$68,900.00	\$20.00	\$68,900.00	\$20.00	\$68,900.00
12.	ADDITIONAL COST FOR BEDDING AND BACKFILL FOR UNSATISFACTORY SOIL CONDITIONS (WET SAND), (TO BE USED ONLY AT THE WRITTEN DIRECTION OF THE ENGINEER), COMPLETE IN PLACE	LF	3445	\$20.00	\$68,900.00	\$20.00	\$68,900.00	\$20.00	\$68,900.00	\$20.00	\$68,900.00
13.	CONSTRUCTION STAKING FOR HARVEST GREEN SECTION 56 FOR WS&D CONSTRUCTION BY THE CONTRACTOR PER KYLE KACAL, GBI SURVEYING, CONTACT 281-499-4539 FOR PRICING, COMPLETE IN PLACE	LS	1	\$15,925.00	\$15,925.00	\$18,150.00	\$18,150.00	\$19,000.00	\$19,000.00	\$18,000.00	\$18,000.00
14.	REMOVE AND OFFSITE DISPOSAL OF LOW WATER CROSSING IN OYSTER CREEK, INCLUDES TWO 102" DIAMETER STEEL PIPES, RESTORING OYSTER CREEK SIDE SLOPES TO ORIGINAL STATE, SEEDING, MOWING, AND WATERING TO ACHIEVE 90% HOMOGENOUS VEGETATION, (TO BE USED ONLY AT THE WRITTEN DIRECTION OF THE ENGINEER), COMPLETE IN PLACE	LS	1	\$4,800.00	\$4,800.00	\$13,000.00	\$13,000.00	\$7,500.00	\$7,500.00	\$15,500.00	\$15,500.00
SUBTOTAL MISCELLANEOUS WS&D ITEMS – HARVEST GREEN SECTION 56					\$167,203.08		\$198,930.00		\$298,666.16		\$227,595.00
MISCELLANEOUS PAVING ITEMS – HARVEST GREEN SECTION 56											
1.	STAGE II INLET PROTECTION BARRIERS AS DIRECTED BY ENGINEER, COMPLETE IN PLACE	EA	25	\$1.00	\$25.00	\$25.00	\$625.00	\$25.00	\$625.00	\$140.00	\$3,500.00
2.	REINFORCED FILTER FABRIC FENCE, COMPLETE IN PLACE	EA	100	\$1.50	\$150.00	\$2.00	\$200.00	\$2.00	\$200.00	\$1.50	\$150.00
3.	BROADCAST SEEDING OF LOTS AND RESERVES IN SECTION 56, INCLUDES WATERING AND FERTILIZING, COMPLETE IN PLACE	AC	21	\$650.00	\$13,650.00	\$650.00	\$13,650.00	\$1,800.00	\$37,800.00	\$650.00	\$13,650.00
4.	FORT BEND COUNTY ONE-YEAR SUBDIVISION BOND FOR HARVEST GREEN SECTION 56 IN THE TOTAL AMOUNT OF THE BOND OF \$253,755.04, COMPLETE IN PLACE	LS	1	\$5,578.00	\$5,578.00	\$4,100.00	\$4,100.00	\$5,000.00	\$5,000.00	\$6,500.00	\$6,500.00
5.	CONSTRUCTION STAKING FOR HARVEST GREEN SECTION 56 FOR PAVING CONSTRUCTION BY THE CONTRACTOR PER KYLE KACAL, GBI SURVEYING, CONTACT 281-499-4539 FOR PRICING, COMPLETE IN PLACE	LS	1	\$3,900.00	\$3,900.00	\$5,000.00	\$5,000.00	\$4,500.00	\$4,500.00	\$4,500.00	\$4,500.00
SUBTOTAL MISCELLANEOUS PAVING ITEMS – HARVEST GREEN SECTION 56					\$23,303.00		\$23,575.00		\$48,125.00		\$28,300.00
BID SUMMARY											
WATER ITEMS – HARVEST GREEN SECTION 56					\$325,416.90		\$370,889.00		\$385,169.20		\$390,889.78
SANITARY SEWER ITEMS – HARVEST GREEN SECTION 56					\$447,059.98		\$356,773.00		\$376,725.76		\$467,010.05
DRAINAGE FACILITIES ITEMS – HARVEST GREEN SECTION 56					\$747,068.28		\$842,398.00		\$1,002,581.78		\$927,289.83
PAVING ITEMS - HARVEST GREEN SECTION 56					\$848,537.64		\$967,592.00		\$862,301.20		\$943,979.00
MISCELLANEOUS WS&D ITEMS – HARVEST GREEN SECTION 56					\$167,203.08		\$198,930.00		\$298,666.16		\$227,595.00
MISCELLANEOUS PAVING ITEMS – HARVEST GREEN SECTION 56					\$23,303.00		\$23,575.00		\$48,125.00		\$28,300.00
TOTAL AMOUNT BASE BID					\$2,558,588.88		\$2,760,157.00		\$2,973,569.10		\$2,985,063.66